

Receptacles for Thread Mounting Modular M23 signal connectors, RC series


Receptacles with screw-in threads are meant for efficient installation directly in the mounting panel. A new variant – the 6D design – now expands the product range of the modular M23 signal connectors of the RC series.

The housing has a central M20 x 1.5 fastening thread, so that the receptacle can be screwed into the mounting panel from the outside. A sealed hexagon nut is included in delivery for countering. The receptacle is then ideally suited for positioned installation, e.g. for angled mating connectors.

Ordering information can be found in the table below. The new receptacles with M20 x 1.5 fastening threads can be combined with insulating bodies of the RC series. This results in a multitude of pin assignments (male or female) with the crimping, solder or screw connection methods.

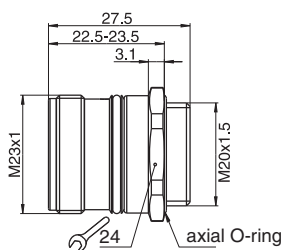
The specified technical data of the RC series applies without change.

Description	Type	Order No.	Pcs. / Pkt.
Receptacle housing, RC series, position adjustable, front mounting, central fastening thread M20 x 1.5	RC-00000006D00	1618220	40
Contact inserts 6- to 19-pos.	order separately, can be combined with solder, screw and crimp contact inserts of the RC series		

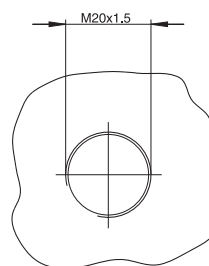
 A pipe wrench is available for countering and fastening the hexagon lock nut.
Pipe wrench type RC-Z2096 (order no. 1604249)



New M23 receptacle, design 6D with M20 x 1.5 fastening thread



RC-00000006D00



Installation dimensions